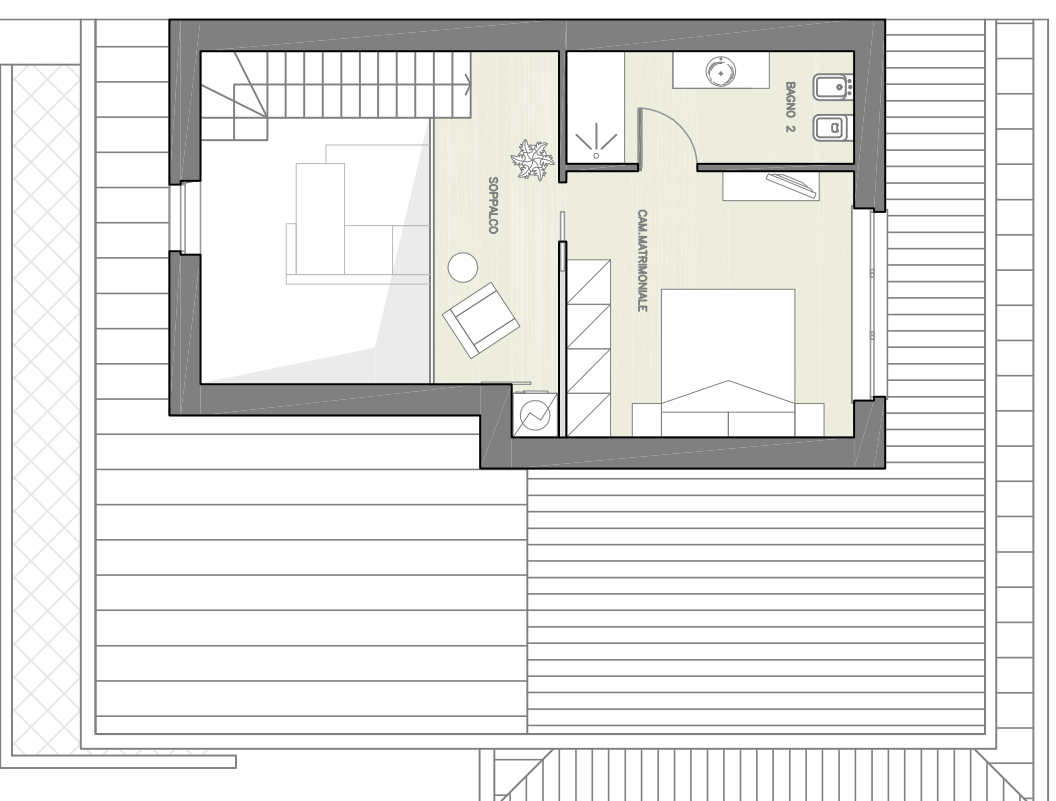
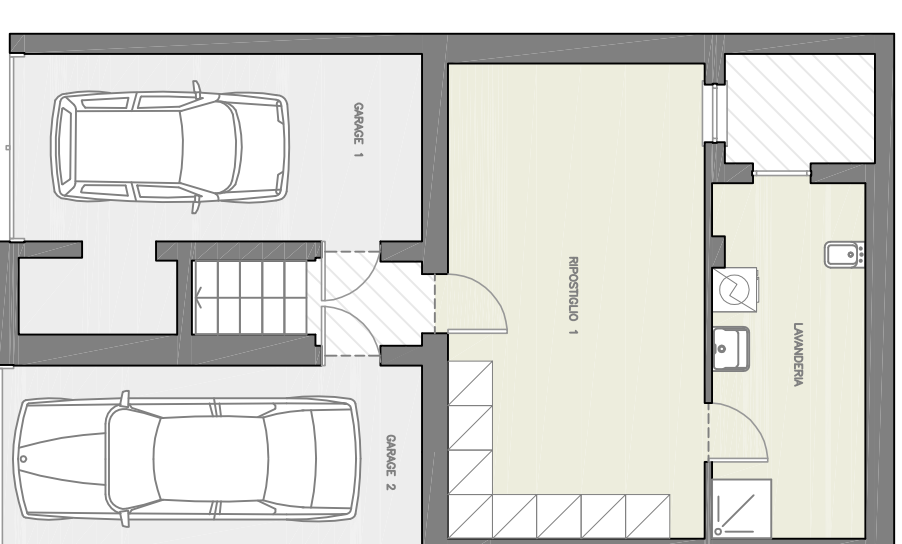


Piano Primo



Piano Secondo



Piano Interrato

SU P1°									
Soggiorno/Cucina	34,22 mq	Terrazzo 1	20,70 mq	Ripostiglio 1	22,31 mq				
Bagno 1	6,48 mq	Terrazzo 2	4,05 mq	Lavanderia	10,03 mq				
Cam.Sing 1	12,31 mq	Terrazzo 3	5,31 mq	Garage 1	13,63 mq				
Cam.Sing 2	11,32 mq			Garage 2	14,71 mq				
SU P2°									
Soppalco	7,67 mq								
Cam.Matrimoniale	14,12 mq								
Bagno 2	5,91 mq								