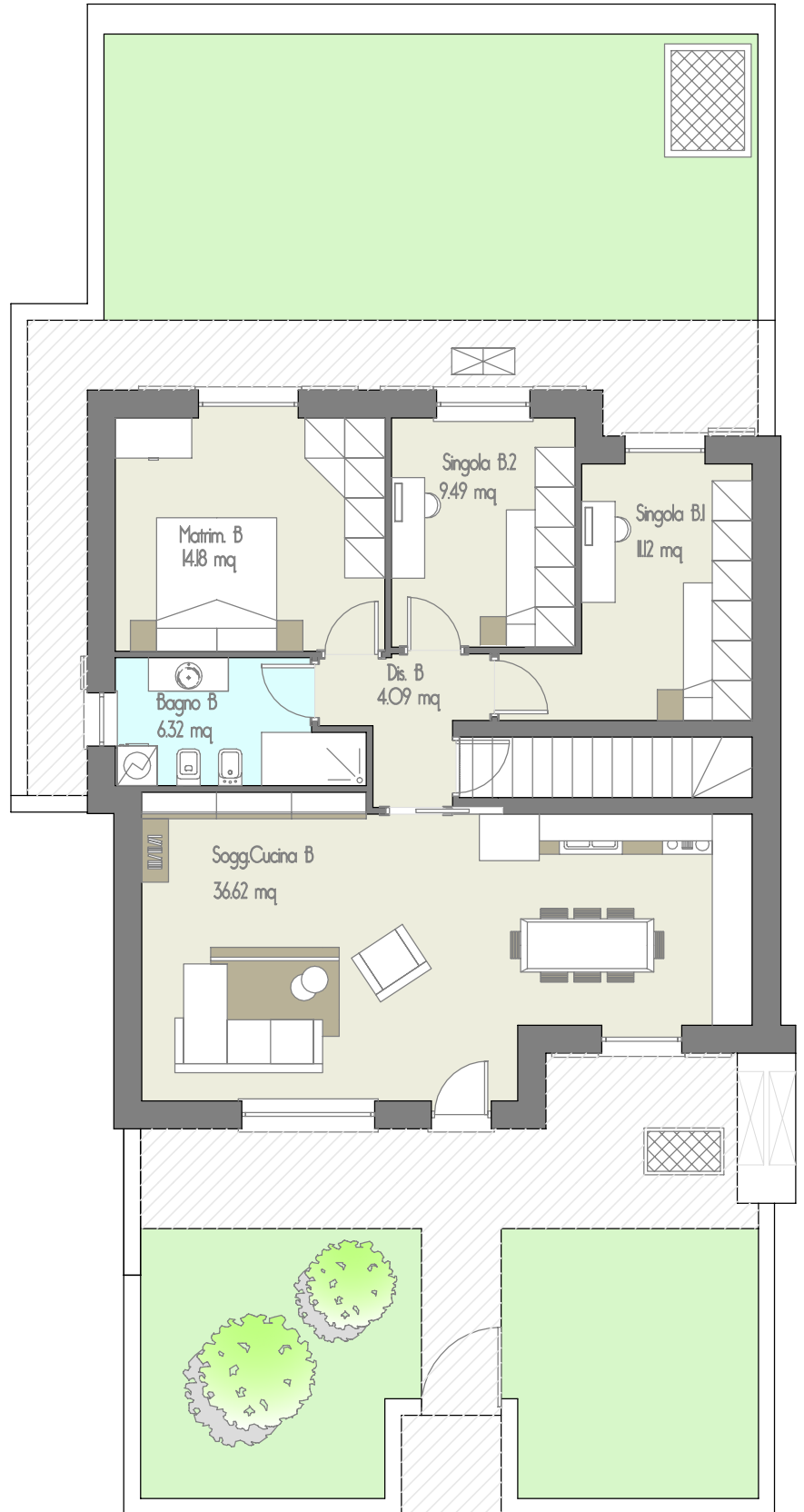
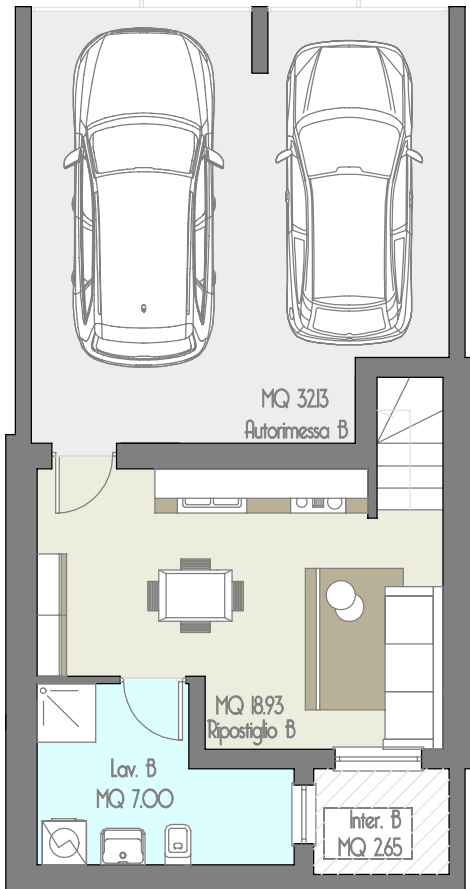


**Edificio A**  
**4 Appartamenti**  
**-Piano Terra-**  
**Quadrilocale lato SX**  
**Formato A4**



**S.U PT**

Soggiorno/Cucina 36.62 mq  
 Dis. 4.09 mq  
 Bagno 6.32 mq  
 Cam.Singola B.1 11.12 mq

Cam.Singola B.2 9.49 mq  
 Cam.Matrimoniale 14.18 mq

**S.U Piano Interrato**

Ripostiglio B.1 18.93 mq  
 Lavanderia 7.00 mq  
 Garage B.1 32.13 mq  
 Inter. 2.65 mq